



OPERATING MANUAL & PARTS LIST

9682096A, 9682097A & 9682098A

PALMGREN®

6", 8" AND 10" VARIABLE SPEED BENCH GRINDERS



Read carefully and follow all safety rules and operating instructions before first use of this product.





DESCRIPTION

Palmgren's variable speed bench grinders with inverter is equipped with a totally enclosed ball bearing motor. Armature assembly is dynamically balanced for smooth operation. Motor housing is compact so long pieces of work can press against both wheel without touching the motor frame. Removable wheel guard covers allow for easy changing of wheels. Tool rests are adjustable for wheel wear and angle grinding. Grinder comes complete with spark guards, safety Eyeshields, and dust collection hose.

SPECIFICATIONS

	9682096A	9682097A	9682098A
Horsepower	1/2	1	1.5
Voltage	115/230	115/230	115/230
Amperes	3/1.5	6/3	7/3.5
Hertz	50/60	50/60	50/60
Phase	Single	Single	Single
RPM	900-3600	900-3600	900-2400
Rotation (viewed from left)	Clockwise	Clockwise	Clockwise
Wheel Diameter	6"	8"	10"
Wheel Bore	1/2"	5/8"	1"
Wheel Face	3/4"	1"	1"
Aluminum Oxide Vitrified Wheels			
36 Coarse and 60 Medium	Yes	Yes	Yes

STRUCTURAL REQUIREMENTS

Make sure all supporting structures and load attaching devices are strong enough to hold your intended loads. If in doubt, consult a qualified structural engineer.

ELECTRICAL REQUIREMENTS

9682096A	115/230 Volts	3/1.5 Amps	1Φ	50/60 Hz
9682097A	115/230 Volts	6/3 Amps	1Φ	50/60 Hz
9682098A	115/230 Volts	7/3.5 Amps	1Φ	50/60 Hz

The standard allowable voltage variation is plus or minus 10%.

TOOLS NEEDED:

Standard mechanic's hand tool set.

UNPACKING

Carton should be handled with care to avoid damage from dropping, bumping, etc. Store and unpack carton with correct side up. If any damage or loss has occurred, claim must be filed with carrier immediately. Check for completeness. Immediately report missing parts to dealer.

To be certain the grinding wheels have not been damaged in shipment, strike the edges slightly with a metal object. A ringing sound indicates a good wheel, but a dull noise may signal a fracture.

WARNING: If you suspect a wheel of being fractured, replace it immediately. Fractured wheels may shatter, causing serious injury.

CONTENTS:

- Bench Grinder
- A 3/8" × 1/2" Locking Knob (2)
- B 3/8" Flat Washer (4)
- C 3/8" Spring Washer (2)
- D Tool Rest Bracket (2)
- E Tool Rest (2)
- F 5/16" Flat Washer (2)
- G 5/16" × 1" Locking Knob (2)
- H 3/16" × 1/2" Philips Screw (4)
- I Upper Eyeshield Bracket (2)
- J Eyeshield (2)
- K Eyeshield Plate (2)
- L 1/4" × 1/2" Locking Knob (2)
- M Spark Guard (2)
- N 3/8" × 1/2" Locking Knob (2)
- O 1/4" Flat Washer (2)
- Dust Collector Hose (1)
- Operating Manual & Parts List (1)

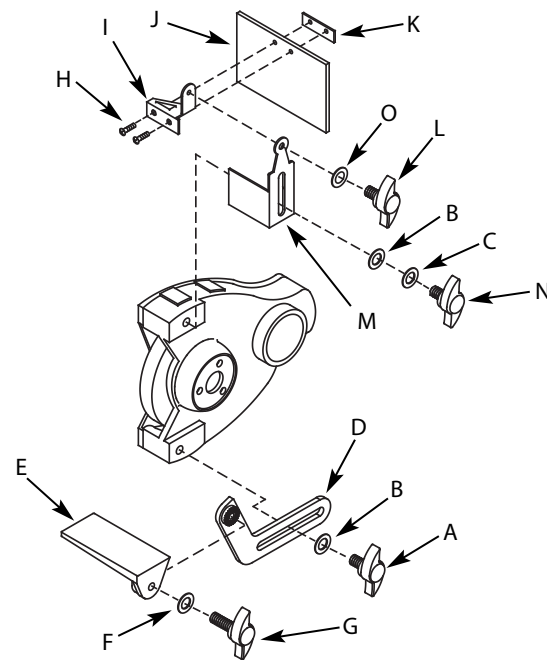


Figure 1 – Left Tool Rest and Eyeshield Assembly

UNPACK:

- Open carton and carefully remove Bench Grinder components from packing material. Do not discard packing materials until after unit has been inspected for damage and completeness. Locate loose parts and set aside.

INSPECT:

- After unpacking the unit, carefully inspect for any damage that may have occurred during transit. Check for loose, missing or damaged parts. Shipping damage claims must be filed with the carrier.
- All tools should be visually inspected before use, in addition to regular periodic maintenance inspections.
- Be sure that the voltage labeled on the unit matches your power supply.



SAFETY RULES

WARNING: For your own safety, read all of the instructions and precautions before operating tool.

PROPOSITION 65 WARNING: Some dust created by using power tools contain chemicals known to the state of California to cause cancer, birth defects or other reproductive harm.

Some examples of these chemicals are:

- Lead from lead-based paints.
- Crystalline silica from bricks and cement and other masonry products.
- Arsenic and chromium from chemically-treated lumber.

Your risk from these exposures varies, depending on how often you do this type of work. To reduce your exposure to these chemicals: work in a well ventilated area and work with approved safety equipment. Always wear **OSHA/NIOSH** approved, properly fitting face mask or respirator when using such tools.

WARNING: Always follow proper operating procedures as defined in this manual even if you are familiar with the use of this or similar tools. Remember that being careless for even a fraction of a second can result in severe personal injury.

BE PREPARED FOR JOB

- Wear proper apparel. Do not wear loose clothing, gloves, neckties, rings, bracelets or other jewelry which may get caught in moving parts of machine.
- Wear protective hair covering to contain long hair.
- Wear safety shoes with non-slip soles.
- Wear safety glasses complying with United States ANSI Z87.1. Everyday glasses have only impact resistant lenses. They are **NOT** safety glasses.
- Wear face mask or dust mask if operation is dusty.
- Be alert and think clearly. Never operate power tools when tired, intoxicated or when taking medications that cause drowsiness.

PREPARE WORK AREA FOR JOB

- Keep work area clean. Cluttered work areas invite accidents.
- Do not use power tools in dangerous environments. Do not use power tools in damp or wet locations. Do not expose power tools to rain.
- Work area should be properly lighted.
- Proper electrical plug should be plugged directly into properly grounded, three-prong receptacle.
- Extension cords should have a grounding prong and the three wires of the extension cord should be of the correct gauge.
- Keep visitors at a safe distance from work area.
- Keep children out of workplace. Make workshop childproof. Use padlocks, master switches or remove switch keys to prevent any unintentional use of power tools.

TOOL SHOULD BE MAINTAINED

- Always unplug tool prior to inspection.
- Consult manual for specific maintaining and adjusting procedures.
- Keep tool lubricated and clean for safest operation.
- Remove adjusting tools. Form habit of checking to see that adjusting tools are removed before switching machine on.
- Keep all parts in working order. Check to determine that the guard or other parts will operate properly and perform their intended function.

- Check for damaged parts. Check for alignment of moving parts, binding, breakage, mounting and any other condition that may affect a tool's operation.
- A guard or other part that is damaged should be properly repaired or replaced. Do not perform makeshift repairs. (Use parts list provided to order repair parts.)

KNOW HOW TO USE TOOL

- Use right tool for job. Do not force tool or attachment to do a job for which it was not designed.
- Disconnect tool from power when changing accessories such as grinding wheels, buffing wheels and the like.
- Avoid accidental start-up. Make sure that the switch is in the off position before plugging in.
- Do not force tool. It will work most efficiently at the rate for which it was designed.
- Keep hands away from moving parts and grinding surfaces.
- Never leave a tool running unattended. Turn the power off and do not leave tool until it comes to a complete stop.
- Do not overreach. Keep proper footing and balance.
- Never stand on tool. Serious injury could occur if tool is tipped over.
- Know your tool. Learn the tool's operation, application and specific limitations.
- Use recommended accessories. Understand and obey all safety instructions supplied with accessories. The use of improper accessories may cause risk of injury to persons.
- Do not over tighten wheel nut. Replace cracked wheel immediately. Use only flanges supplied with the grinder.
- Adjust distance between wheel and tool rest to maintain 1/16" or less gap.
- Handle the workpiece correctly. Whenever possible, use tool rest to support workpiece during grinding operation. Turn tool off if it jams.
- Always use guards and eyeshields.
- Clean grinding dust from beneath tool frequently.

CAUTION: Think safety! Safety is a combination of operator common sense and alertness at all times when tool is being used.

ASSEMBLY

Parts to be fastened to the unit should be located and accounted for (See content list and figure 1, page 2).

CAUTION: Do not attempt assembly if parts are missing. Use this manual to order repair parts.

TOOL REST ASSEMBLY

Refer to Figure 1, page 2.

1. Place left tool rest (E) over left tool rest bracket (D) and secure in position with 5/16" flat washer (F) and 5/16" x 1" locking knob (G).
2. Attach tool rest bracket to the bottom of the left wheel guard using one 3/8" flat washer (B) and one 3/8" x 1/2" locking knob (A). Make sure that the slot of the bracket is located over the raised boss on the guard. Tighten knob finger tight.
3. Position tool rest so that distance between tool rest and grinding wheel is less than 1/16". Reposition angle of tool rest if necessary. Secure all knobs.
4. Mount right tool rest in a similar manner.

**ASSEMBLY (CONTINUED)****EYESHIELD ASSEMBLY**

Refer to Figure 1, page 2.

1. Attach left spark guard (M) to left wheel guard using 3/8" flat washer (B), 3/8" spring washer (C) and 3/8" x 1/2" knob (N).
2. Mount left upper eyeshield bracket (I) to eyeshield (J) and eyeshield plate (K) using two 3/16" x 1/2" phillips screws (H).

NOTE: Left upper eyeshield bracket is stamped "L" for identification.

3. Slide 1/4" x 1/2" knob (L) through hole at top of left spark guard (M) into upper eyeshield bracket (I) and secure in position.
4. Locate eyeshield in desired position for protecting operator and secure all knobs.
5. Mount right eyeshield assembly in a similar manner.

DUST COLLECTOR HOSE

A dust collector hose has been provided with grinder. Slide hoses onto sides of T-connector and flanges. Mount the hose by sliding the flanges at each end over the exhaust ports on the left and right wheel guards. Attach 2½" shop vacuum hose to collector hose. Be sure hose is mounted securely.

DANGER: Be sure to empty shop vacuum of all flammable material (flammable liquids and vapors, paper, wood, plastic, etc.) before connecting vacuum to grinder. Hot sparks from grinder may ignite flammable materials in shop vacuum.

INSTALLATION**MOUNT GRINDER**

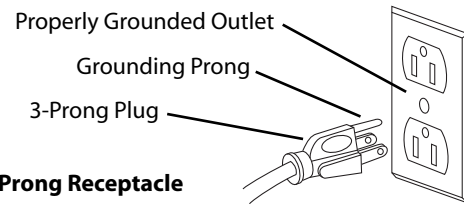
1. Mount grinder to a solid horizontal surface (hardware not provided). If mounted to metal pedestal, align mounting holes with corresponding holes in pedestal. Insert a 1/4"-20 x 1¼" hex head bolt with flat washer through base of grinder. From bottom of pedestal, place a 1/4" flat washer and 1/4"-20 hex nut onto the bolt. Tighten only until space between grinder base and pedestal is 1/8". Using second nut on each bolt, jam tighten against the first to prevent loosening by vibration.
2. To mount grinder to wooden bench top, use 1/4" x 1¼" wood screws with flat washers beneath heads. Tighten screws until space between grinder base and bench top is 1/8".

GROUNDING INSTRUCTIONS

WARNING: Improper connection of equipment grounding conductor can result in the risk of electrical shock. Equipment should be grounded while in use to protect operator from electrical shock. Check with a qualified electrician if grounding instructions are not understood or if in doubt as to whether the tool is properly grounded.

This grinder is equipped with an approved 3-conductor cord rated at 300V and a 3-prong, grounding type plug (See Figure 2) for your protection against shock hazards.

Grounding plug should be plugged directly into a properly installed and grounded 3-prong grounding-type receptacle (See Figure 2).

**Figure 2 – 3-Prong Receptacle**

Do not remove or alter grounding prong in any manner. In the event of a malfunction or breakdown, grounding provides a path of least resistance for electrical shock.

WARNING: Do not permit fingers to touch the terminals of plug when installing or removing from outlet.

Plug must be plugged into matching outlet that is properly installed and grounded in accordance with all local codes and ordinances. Do not modify plug provided. If it will not fit in outlet, have proper outlet installed by a qualified electrician.

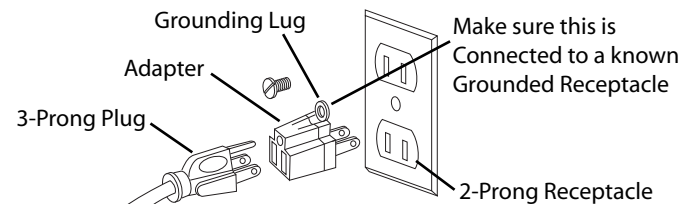
Inspect tool cords periodically, and, if damaged, have repaired by an authorized service facility.

Green (or green and yellow) conductor in cord is the grounding wire. If repair or replacement of the electric cord or plug is necessary, do not connect the green (or green and yellow) wire to a live terminal.

Where a 2-prong wall receptacle is encountered, it must be replaced with a properly grounded 3-prong receptacle installed in accordance with National Electric Code and local codes and ordinances.

WARNING: This work should be performed by a qualified electrician.

A temporary 3-prong to 2-prong grounding adapter (See Figure 3) is available for connecting plugs to a two pole outlet if it is properly grounded.

**Figure 3 – 2-Prong Receptacle with Adapter**

Do not use a 3-prong to 2-prong grounding adapter unless permitted by local and national codes and ordinances.

(A 3-prong to 2-prong grounding adapter is not permitted in Canada.) Where permitted, the rigid green tab or terminal on the side of the adapter must be securely connected to a permanent electrical ground such as a properly grounded water pipe, a properly grounded outlet box or a properly grounded wire system.

Many cover plate screws, water pipes and outlet boxes are not properly grounded. To ensure proper ground, grounding means must be tested by a qualified electrician.



INSTALLATION (CONTINUED)**EXTENSION CORDS**

- The use of any extension cord will cause some drop in voltage and loss of power.
- Wires of the extension cord must be of sufficient size to carry the current and maintain adequate voltage.
- Running the unit on voltages which are not within $\pm 10\%$ of the specified voltage may cause overheating and motor burn-out.
- Use the table to determine the minimum wire size (A.W.G.) extension cord.
- Use only 3-wire extension cords having 3-prong grounding type plugs and 3-pole receptacles which accept the tool plug.
- If the extension cord is worn, cut or damaged in any way, replace it immediately.

EXTENSION CORD

Length	9682096A	9682097A	9682098A
Up to 25 ft	16 A.W.G.	18 A.W.G.	16 A.W.G.

NOTE: Using extension cords over 25 ft. long is not recommended.

ELECTRICAL CONNECTIONS

▲ WARNING All electrical connections must be performed by a qualified electrician. Make sure tool is off and disconnected from power source while motor is mounted, connected, reconnected or anytime wiring is inspected.

Motor is assembled with approved, 3-conductor cord to be used at 120 volts. Motor is prewired at the factory for 120 volts.

OPERATION

See Figure 4.

WARNING: Always wear safety glasses complying with United States ANSI Z87.1 before commencing power tool operation.

- To turn power on press the "ON/OFF" button
- The control panel indicates 3 power ranges: Low-Medium-High
- To operate grinder at max speed press "High" button.
- To change speeds in the high range press the (UP) or (DOWN).
- Remember you are starting at the max speed within that range.
- You may change ranges while the wheels are rotating.
- You may change speeds within the range while the wheels are rotating.
- To turn the power off press the "ON/OFF" button again.

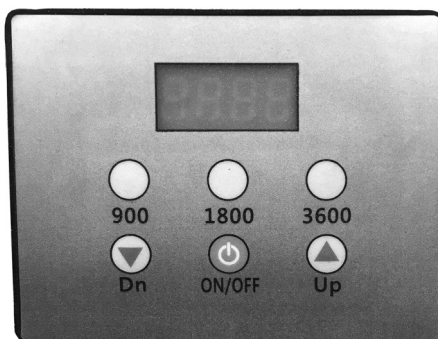


Figure 4 – Control Panel

- Keep a steady, moderate pressure on the work and keep it moving at an even pace for smooth grinding.
- Keep a steady, moderate pressure on the work and keep it moving at an even pace for smooth grinding.
- Pressing too hard overheats the motor and prematurely wears down the grinding wheels.
- Note the original bevel angle on the item to be sharpened and try to maintain that angle. Sharpening a cutting edge requires removing burrs from edge.
- Deburring edge is done best by using the grinder to pull burr from edge across the bevel angle.
- The grinding wheel should rotate into object being sharpened.
- Use slower wheel speed when sharpening tempered tools. Overheating will destroy the temper.
- When grinding at high speed, dip work into a coolant regularly to prevent overheating. Overheating can weaken metals.

MAINTENANCE

- As wheels wear, tool rests should be positioned closer to the face of the wheels.
- The gap between the wheel and the tool rest should not be greater than 1/16". When the wheels are worn to the extent that the 1/16" maximum gap cannot be maintained, the wheels should be replaced.
- Models 9682096A and 9682097A replacement wheels should have a minimum rated speed of at least 3600 RPM. Model 9682098A replacement wheels should have a minimum rated speed of at least 2400 RPM.
- Maximum wheel diameter is 6" for 9682096A, 8" for 9682097A and 10" for 9682098A.
- To loosen nuts holding the wheels, disconnect power and push a wood wedge between the tool rest and the wheel to keep the shaft from turning. The threads on the right side of the grinder (facing unit) are right hand; threads on the left side are left hand. Tighten nuts securely before operating the grinder.
- For grinding efficiency, wheels should be dressed periodically, especially if they become clogged from grinding soft metals. Palmgren Grinding Wheel Dressers, Model 9682901 or 9682902, are recommended (See page 9).



TROUBLESHOOTING

SYMPTOM	POSSIBLE CAUSE(S)	CORRECTIVE ACTION
Grinder won't start	1. Blown line fuse or tripped circuit breaker	1. If fuse is blown, replace with fuse of proper size. If breaker tripped, reset it
	2. Low line voltage	2. Check power supply for voltage and correct as needed
	3. Material wedged between wheel and guard	3. Turn grinder off and remove material
	4. Defective switch	4. Replace switch
	5. Defective, blown capacitor	5. Replace capacitor
	6. Defective circuit board	6. Replace circuit board
Excessive vibration	1. Improper mounting of grinder or accessories	1. Remount
	2. Grinding wheel out of balance	2. Dress wheels or replace wheels
	3. Improper wheel mounting	3. Remount wheels, but rotate one wheel 90° with respect to its previous position. Other wheel should remain in its original position
Motor overheating	1. Excess pressure required to grind material	1. Dress wheel or replace wheel with one of proper grit
	2. Grinding on side of wheel	2. Grind only on face of wheel
	3. Motor not turning freely (without power)	3. Clean around wheels and shaft and/or replace bearings
Fuses are being blown or circuit breakers are being tripped	1. Overloading due to binding	1. Clean around wheels and shaft and/or replace bearings
	2. Defective plug	2. Replace plug
	3. Defective cord	3. Replace cord
	4. Defective switch	4. Replace switch
	5. Faulty internal wiring	5. Contact authorized Palmgren Service Center
Grinder will not operate in variable speed mode	1. Defective variable speed switch	1. Replace switch
	2. Defective sensor	2. Replace sensor
	3. Defective circuit board	3. Replace circuit board

ELECTRONIC ERROR CODE GUIDE

ELECTRONIC ERROR CODE	DESCRIPTION	CORRECTIVE ACTION
OT	Motor Over Heated	Turn the unit off and unplug to let the motor cool.
OV	Excessive Voltage	Check Voltage and current. If within range, press ON/OFF (Reset Button).
LV	Low Voltage	
OL	Motor Overloaded	
OC	Excessive Input Current	

If error still exists please contact your Palmgren Distributor or call 1-800-827-3398.



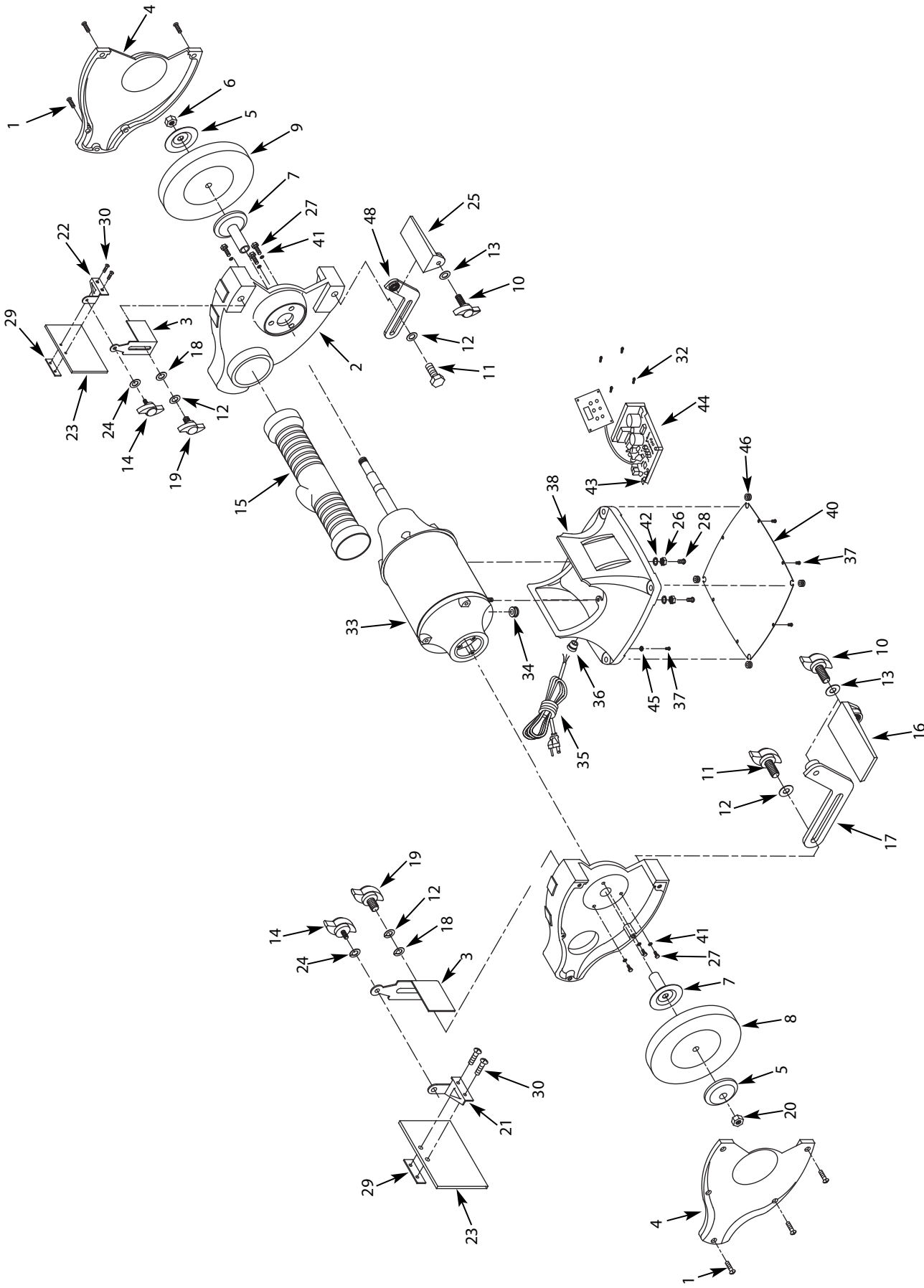


Figure 5 – Repair Parts Illustration for Bench Grinders

REPAIR PARTS LIST FOR BENCH GRINDERS

Ref. No.	Description	Part No. for 9682096A	Part No. for 9682097A	Part No. for 9682098A	Qty.	Ref. No.	Description	Part No. for 9682096A	Part No. for 9682097A	Part No. for 9682098A	Qty.
1	3/16" x 3/8" Screw	*	*	-	10	25	Tool Rest (Right)	9625825.00	9625825.00	9625825.00	1
1	1/4" x 3/4" Screw	-	-	*	10	26	M8 Spring Washer	-	-	*	4
2	Wheel Guard	9625959.01	9626056.01	9626057.01	2	27	1/4" x 5/8" Hex Head Screw	*	*	-	6
3	Spark Guard (set of 2)	9625814.00	9625815.00	9625815.00	1	27	5/16" x 3/4" Hex Head Bolt	-	-	*	6
4	Wheel Guard Cover	9624464.03	9624496.03	9616911.03	2	28	M6 x 15 Round Screw, Spring Washer	*	*	-	2
5	Flange	9600065.01	9624497.00	9624480.00	2	28	5/16" x 1" Hex Head Screw	-	-	*	4
6	1/2"-12 Hex Nut (RH Thread)	9600548.00	-	-	1	29	Eye Shield Plate	†	†	†	2
6	5/8"-11 Hex Nut (RH Thread)	-	9600088.00	-	1	30	3/16" x 1/2" Philip Screw	*	*	*	4
6	1"-8 Hex Nut (RH Thread)	-	-	9600110.00	1	32	4 x 6mm Spring Screw	*	*	*	4
7	Inner Wheel Flange	9617316.00	9624498.00	9624481.00	2	33	Motor	†	†	†	1
8	Grinding Wheel (36 Coarse Grit)	*	*	*	1	34	Grommet	9601066.00	9601066.00	9616916.00	2
9	Grinding Wheel (60 Medium Grit)	*	*	*	1	35	Line Cord	9600067.00	9600090.00	9600090.00	1
10	5/16" x 1" Locking Knob	9625812.00	9625812.00	9625812.00	2	36	Strain Relief	9604055.00	9601601.00	9601601.00	1
11	3/8" x 1/2" Locking Knob	*	*	*	2	37	3/16" x 1/4" Flange Screw	*	*	-	7
12	3/8" Flat Washer	*	*	*	4	38	Base	†	†	†	1
13	5/16" Flat Washer	*	*	*	2	40	Base Cover	9623758.00	9624500.00	9616919.00	1
14	1/4" x 1/2" Locking Knob	9625816.00	9625816.00	9625816.00	2	41	1/4" Lock Washer	*	*	-	6
15	Dust Collector Hose	9608070.01	9608070.00	9608070.02	1	41	5/16" Lock Washer	-	-	*	6
16	Tool Rest (Left)	9625813.00	9625813.00	9625813.00	1	42	6mm Flat Washer	*	*	-	2
17	Bracket (Left)	9625810.00	9631447.00	9626290.00	1	42	8mm Flat Washer	-	-	*	4
18	3/8" Spring Washer	*	*	*	2	43	3 x 10mm Screw	*	*	*	4
19	3/8" x 1/2" Locking Knob	9625817.00	9625817.00	9625817.00	2	44	Inverter	9640118.01	9640118.02	9640118.03	1
20	1/2"-12 Hex Nut (LH Thread)	9600064.00	-	-	1	45	#10 Serrated Washer	*	*	*	4
20	5/8"-11 Hex Nut (LH Thread)	-	9600087.00	-	1	46	Base Bumper	9623758.00	9623991.00	9623991.00	4
20	1"-8 Hex Nut (LH Thread)	-	-	960111.00	1	48	Bracket (Right)	9623758.00	9631448.00	9626291.00	1
21	Upper Eyesield Bracket (Left)	9625177.00	9625177.00	9625177.00	1	Recommended Accessories					
22	Upper Eyesield Bracket (Right)	9625188.00	9625188.00	9625188.00	1	△	Cast Iron Tool Stand	9670101	9670101	9670101	
23	Eyesield Kit, 23,19,30 (Set of 2)	9632290.00	9632290.00	9632290.00	1	△	Grinding Wheel Dresser	9682901	9682901	9682901	
24	1/4" Flat Washer	*	*	*	2	△	Large Grinding Wheel Dresser	9682902	9682902	9682902	

(△) Not shown.

(†) Not available as repair part.

(*) Standard hardware item, available locally.

PALMGREN WARRANTY

C.H. Hanson / Palmgren warrants their products to be free of defects in material or workmanship. This warranty does not cover defects due directly or indirectly to misuse, abuse, normal wear and tear, failure to properly maintain the product, heated, ground or otherwise altered, or used for a purpose other than that for which it was intended.

The warranty does not cover expendable and/or wear part (i.e. v-belts, screws, abrasives, jaws), damage to tools arising from alteration, abuse or use other than their intended purpose, packing and freight. The duration of this warranty is expressly limited to the terms noted below beginning from the date of delivery to the original user.

The Palmgren branded items carry the following warranties on parts:

All vises, clamps, positioning tables, tombstones, jack screws and vise accessories - LIFETIME.

All bench grinders, drill presses, tapping machines, band saws, lathes, milling machines, arbor presses, abrasive finishing machines and work stands - 3 YEARS.

The obligation of C.H. Hanson / Palmgren is limited solely to the repair or replacement, at our option, at its factory or authorized repair agent of any part that should prove inoperable. Purchaser must lubricate and maintain the product under normal operating conditions at all times. Prior to operation become familiar with product and the included materials, i.e. warnings, cautions and manuals.

Failure to follow these instructions will void the warranty.

This warranty is the purchaser's exclusive remedy against C.H. Hanson for any inoperable parts in its product. Under no circumstances is C.H. Hanson liable for any direct, indirect, incidental, special or consequential damages including loss of profits in any way related to the use or inability to use our products. This warranty gives you specific legal rights which may vary from state to state.

PALMGREN[®]

Palmgren - a C.H. Hanson Company
2000 N. Aurora Rd., Naperville, IL 60563 U.S.A.
or call 1-800-827-3398

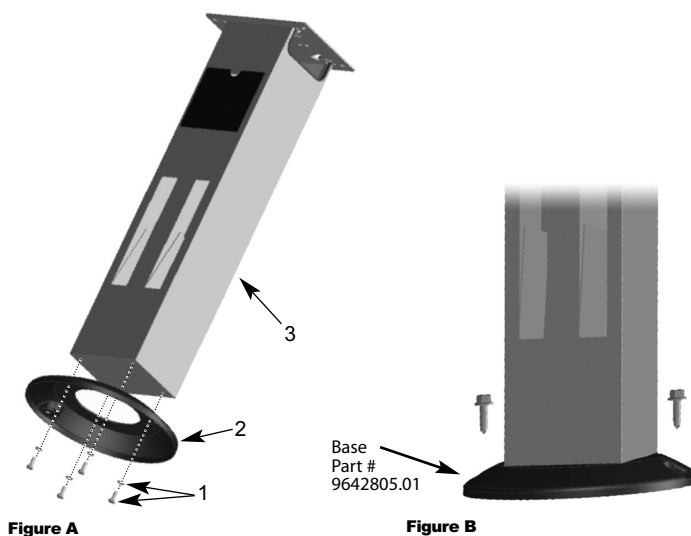
PALMGREN[®]
a CH Hanson brand

PEDESTAL GRINDER STAND

UNPACKING

Carton should be handled with care to avoid damage from dropping, bumping, etc. Store and unpack carton with correct side up. After unpacking, inspect carefully for any damage that may have occurred during transit. Check for loose, missing or damaged parts. If any damage or loss has occurred, claim must be filed with carrier immediately. Check for completeness. Immediately report missing parts to dealer.

ASSEMBLY INSTRUCTIONS



ASSEMBLE STAND

Refer to Figure A. Using the screws and washers (1) provided, screw together the footplate (2) and column (3), as illustrated. Tighten the screws securely. Position stand 9670100 securely.

MOUNT STAND TO SURFACE

Refer to Figure B. Ensure it is steady. Install the stand on a level, stable and robust ground surface and secure it against falling over with screws that are appropriate for the ground surface. The screws must securely anchor the stand in the ground surface. (Screws not included in scope of delivery).

SECURE BENCH GRINDER TO STAND

Using appropriate screws, secure the bench grinder to be attached to the stand. (Screws not included in scope of delivery).

PALMGREN WARRANTY

C.H. Hanson / Palmgren warrants their products to be free of defects in material or workmanship. This warranty does not cover defects due directly or indirectly to misuse, abuse, normal wear and tear, failure to properly maintain the product, heated, ground or otherwise altered, or used for a purpose other than that for which it was intended.

The warranty does not cover expendable and/or wear part (i.e. v-belts, screws, abrasives, jaws), damage to tools arising from alteration, abuse or use other than their intended purpose, packing and freight. The duration of this warranty is expressly limited to the terms noted below beginning from the date of delivery to the original user.

The Palmgren branded items carry the following warranties on parts:

All vises, clamps, positioning tables, tombstones, jack screws and vise accessories - LIFETIME.

All bench grinders, drill presses, tapping machines, band saws, lathes, milling machines, arbor presses, abrasive finishing machines and work stands - 3 YEARS.

The obligation of C.H. Hanson / Palmgren is limited solely to the repair or replacement, at our option, at its factory or authorized repair agent of any part that should prove inoperable. Purchaser must lubricate and maintain the product under normal operating conditions at all times. Prior to operation become familiar with product and the included materials, i.e. warnings, cautions and manuals.

Failure to follow these instructions will void the warranty.

This warranty is the purchaser's exclusive remedy against C. H. Hanson for any inoperable parts in its product. Under no circumstances is C. H. Hanson liable for any direct, indirect, incidental, special or consequential damages including loss of profits in any way related to the use or inability to use our products. This warranty gives you specific legal rights which may vary from state to state.



Palmgren - a C.H. Hanson Company
2000 N. Aurora Rd., Naperville, IL 60563 U.S.A.
or call: 1-800-827-3398