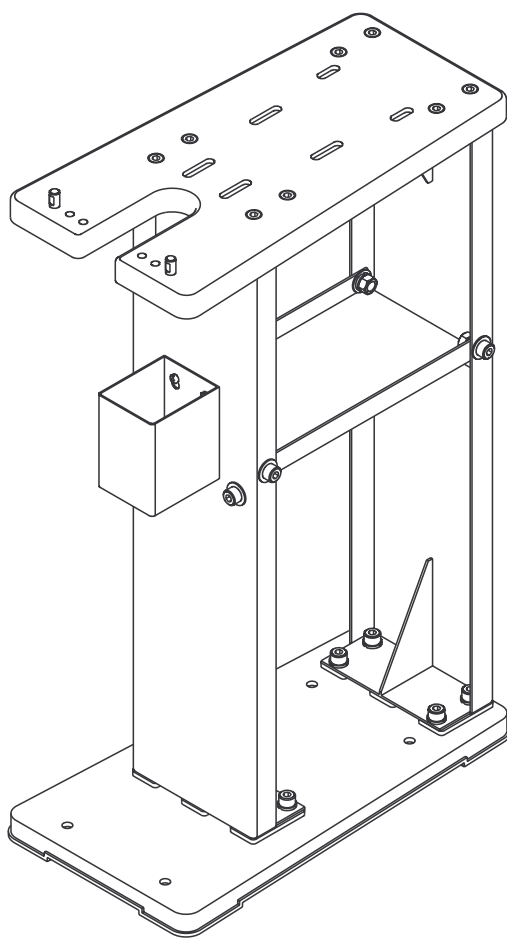


PALMGREN[®]

ARBOR PRESS STAND



Read carefully and follow all safety rules and operating instructions before first use of this product.

DESCRIPTION

Palmgren Arbor Press Stand is designed to accommodate Palmgren arbor presses. Stand features sturdy steel and cast iron construction. Holes in stand top are conveniently located for easy mounting of arbor press.

SAFETY RULES

WARNING: For your own safety read all of the instructions and precautions before operating tools.

- Know the stand and the tool. Read and understand manuals and other instructions provided.
- Securely bolt stand to floor.
- Use only accessories designed for stand or tool.
- Make sure tools and accessories are securely clamped.
- Always check your set up. For example, see that ram contacts workpiece squarely before applying pressure.
- Keep your mind on your work. Be alert.
- Dress properly. Do not wear jewelry, gloves, or loose clothing.
- Wear a face shield or safety glasses.
- Never place hands in jeopardy.

DIMENSIONS

Refer to Figure 1.

Stock No.	9670103A	
Top Surface	A	11 ¹³ / ₁₆ X 22 ¹ / ₁₆ "
Base	B	11 ¹³ / ₁₆ X 22 ¹ / ₄ "
Height	C	33 ¹³ / ₁₆ "
Weight	100 lbs	

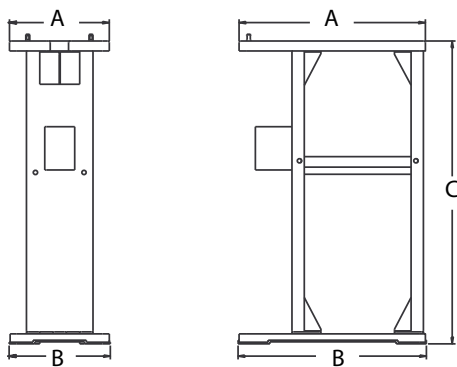


Figure 1 - Dimensions

ASSEMBLY

Refer to Figure 3, page 5.

- Place base (Ref. No. 1) on floor. Align holes in bottom of front and rear panels (Ref. Nos. 2 and 9) to holes in base and secure with bolts (Ref. No. 3) and lock washers. Leave bolts loose.
- Align holes in tray (Ref. No. 13) with holes in front panel. Insert socket head bolts with flat washer (Ref. Nos. 3 and 4) through the panel and tray. Slide flat washer and lock washer onto bolts and secure each with hex nut (Ref. Nos. 4, 6 and 14). Leave nuts loose. Repeat for rear panel (Ref. No. 2).
- Align holes in top (Ref. No. 5) with holes in panels. Insert bolts (Ref. No. 7) through top and panels. Secure bolts with flat washers, lock washers and hex nuts (Ref. Nos. 4, 6 and 14). Leave nuts loose.
- Adjust pieces square to each other. Tighten all bolts and nuts securely.
- Insert pan head screws (Ref. No. 11), from the front, half their length into holes in front panel. Hang the cup (Ref. No. 10) on the screw threads. Adjust screws to leave 1-2 mm play between cup and panel and secure screws with hex nuts (Ref. No. 12).
- Secure base to floor. (Fasteners not supplied).

WARNING: If stand is not secured to floor, stand could tip during operation. Extreme care must be taken to avoid injury to operator or others.

OPERATION

Refer to Figure 2 and following table.

Match the model of arbor press to be installed on the stand with the location of pin holes and slots for that press. Screw pins (Ref. No. 8) into specified holes. Secure arbor press to stand in correct slots using 3/8" bolts (recommended bolt length listed below) with two flat washers, a lock washer and hex nut (not supplied).

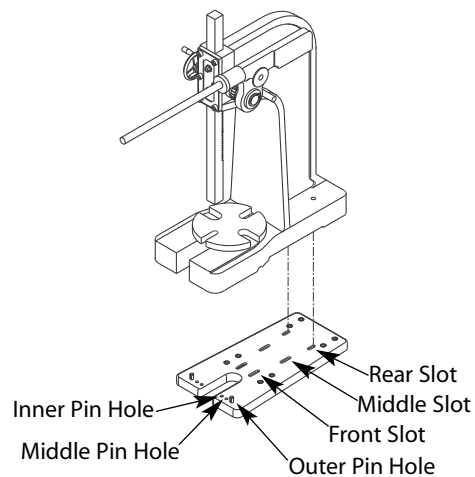


Figure 2 - Arbor Press Installation

Model Type	9661401	9661302	9661301	9661201	9661101	9661051
Pin Hole	Outer	Outer	Middle	Inner	Inner	Outer
Slot	Rear	Rear	Middle	Middle	Front	Front
Bolt Length	6 ¹ / ₂ "	4"	5"	4"	3 ¹ / ₄ "	2 ³ / ₄ "

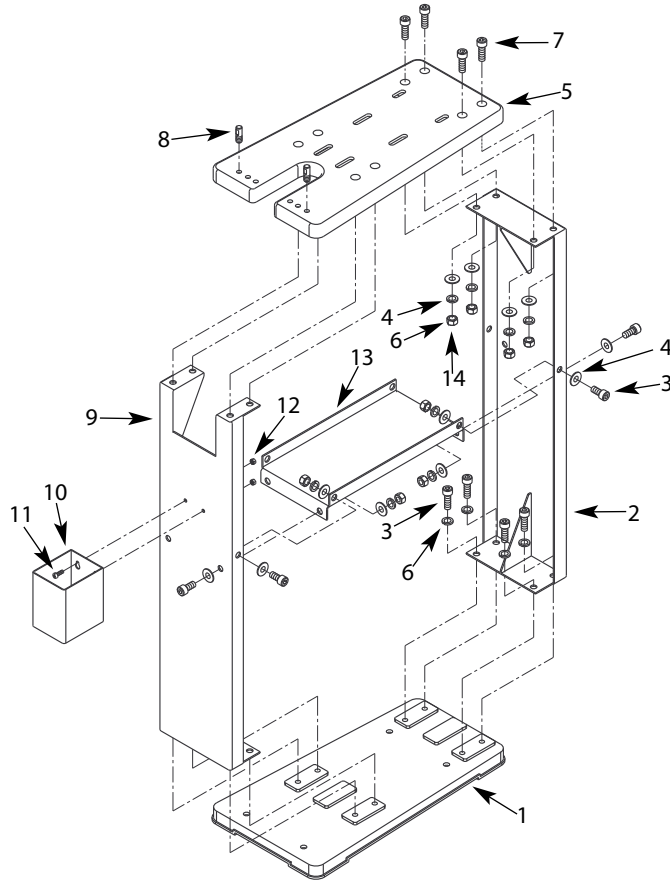


Figure 3 - Replacement Parts Illustration for Arbor Press Stand

REPLACEMENT PARTS LIST FOR ARBOR PRESS STAND

Ref. No.	Description	Part Number	Qty.
1	Base	962877000	1
2	Rear Panel	962877100	1
3	12-1.75 x 25mm Socket Head Bolt	*	16
4	12mm Flat Washer	*	24
5	Top	962877200	1
6	12mm Lock Washer	*	24
7	12-1.75 x 35mm Socket Head Bolt	*	8
8	Pin	962877300	2
9	Front Panel	962877400	2
10	Cup	962877500	1
11	6-1.0 x 20mm Pan Head Screw	*	2
12	6-1.0mm Hex Nut	*	2
13	Tray	962877600	1
14	12-1.75mm Hex Nut	*	16

△ Not Shown.

* Standard hardware item available locally.

PALMGREN WARRANTY

C.H. Hanson / Palmgren warrants their products to be free of defects in material or workmanship. This warranty does not cover defects due directly or indirectly to misuse, abuse, normal wear and tear, failure to properly maintain the product, heated, ground or otherwise altered, or used for a purpose other than that for which is was intended.

The warranty does not cover expendable and/or wear part (i.e. v-belts, screws, abrasives, jaws), damage to tools arising from alteration, abuse or use other than their intended purpose, packing and freight. The duration of this warranty is expressly limited to the terms noted below beginning from the date of delivery to the original user.

The Palmgren branded items carry the following warranties on parts:

All vises, clamps, positioning tables, arbor presses, tombstones, jack screws and vise accessories - LIFETIME.

All bench grinders, drill presses, tapping machines, band saws, lathes, milling machines, abrasive finishing machines and work stands - 3 YEARS.

The obligation of C.H. Hanson / Palmgren is limited solely to the repair or replacement, at our option, at its factory or authorized repair agent of any part that should prove inoperable. Purchaser must lubricate and maintain the product under normal operating conditions at all times. Prior to operation become familiar with product and the included materials, i.e. warnings, cautions and manuals.

Failure to follow these instructions will void the warranty.

This warranty is the purchaser's exclusive remedy against C.H. Hanson for any inoperable parts in its product. Under no circumstances is C.H. Hanson liable for any direct, indirect, incidental, special or consequential damages including loss of profits in any way elated to the use or inability to use our products. This warranty gives you specific legal rights which may vary from state to state.



Palmgren - a C.H. Hanson Company
2000 N. Aurora Rd., Naperville, IL 60563 U.S.A.
or call **1-800-827-3398**